

# Christopher Ford Commerce Park

The Christopher C. Ford Commerce Park is located in Lake County Florida. Lake County is part of the Central Florida Metro Orlando Statistical Area which includes, Lake County, Orange County Osceola County and Seminole County. Christopher C. Ford Commerce Park was developed by Lake County as a location for heavy industrial and distribution facilities. The park now encompasses more than 700 acres and is located adjacent to U.S. Highway 27 at the crossroads of State Road 19 and the Florida Turnpike



The Developer for the Commerce Park is Lake County. The Commerce Park is a Development of Regional Impact (DRI). A DRI is defined as “any development which, because of its character, magnitude, or location would have a substantial effect upon the health, safety, or welfare of citizens of more than one county.” **380.06, F.S.** The Commerce Park has a Master stormwater permit and all horizontal infrastructure for the park is already in place.

## Current Utility Providers:

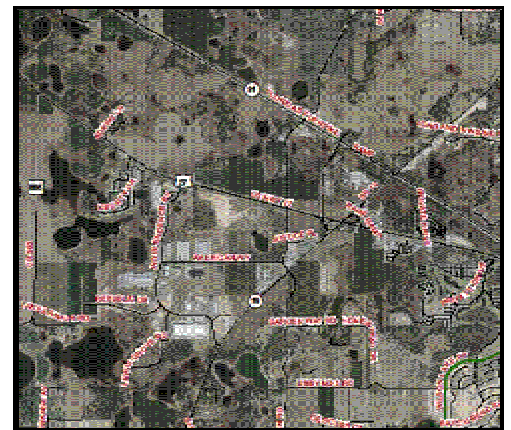
Water and Sewer – City of Groveland - [groveland-fl.gov](http://groveland-fl.gov)

Natural Gas - Lake Apopka Gas - [www.langd.org](http://www.langd.org)

Electric - Seco - [www.secoenergy.com](http://www.secoenergy.com)

Cable, Phone, Internet – Comcast – [www.comcast.com](http://www.comcast.com)

Phone, Internet – Embarq – [www.Embarq.com](http://www.Embarq.com)



## **Christopher Ford Commerce Park Businesses**

Lake County Welcome Center  
Carroll Fulmer Trucking  
Dunkin Donuts  
Ryder Truck Rental  
Maritec Industries  
American Marine Sports  
West Orange Lumber  
Imagination Station Child Development Center  
PERI Formworks Systems  
R A Seagel Co  
US Fish & Wildlife  
QuietFlex Manufacturing  
UTI Integrated Logistics  
Dominoes Distribution  
KMM Logistics  
KGP Logistics  
Metals USA  
Cooks Power Equipment Distribution

### **Approved Site Plans**

Matrix – 19952 Independence blvd – 2 warehouses -27,000sf and 43,000sf – Under Construction

CB Group - Independence Blvd and Lewis Grove Road – Distribution Warehouse - 212,320sf – Approved to be built

IDI – Independence Blvd – Distribution Center – 359,590sf – Approved

## Transportation

The Center of Christopher Ford Commerce Park is ideally located in the geographic center of the state of Florida. Additionally, it is one mile away from Florida's main transportation artery, The Florida Turnpike. This access to the turnpike is centered between Interstate 4 (27 miles away) and Interstate 75 (24 miles away), providing the optimal location to service Central Florida.



## *Transportation Times*

- 38 minutes to downtown Orlando, FL
- 45 minutes to Walt Disney World
- 47 minutes to Kissimmee, FL
- 52 minutes to Ocala, FL
- 1hr 14 minutes to Lakeland, FL
- 1hr 24 minutes to Gainesville, FL
- 1hr 26 minutes to Titusville, FL
- 1hr 27 minutes to Daytona Beach, FL
- 1hr 35 minutes to Tampa, FL